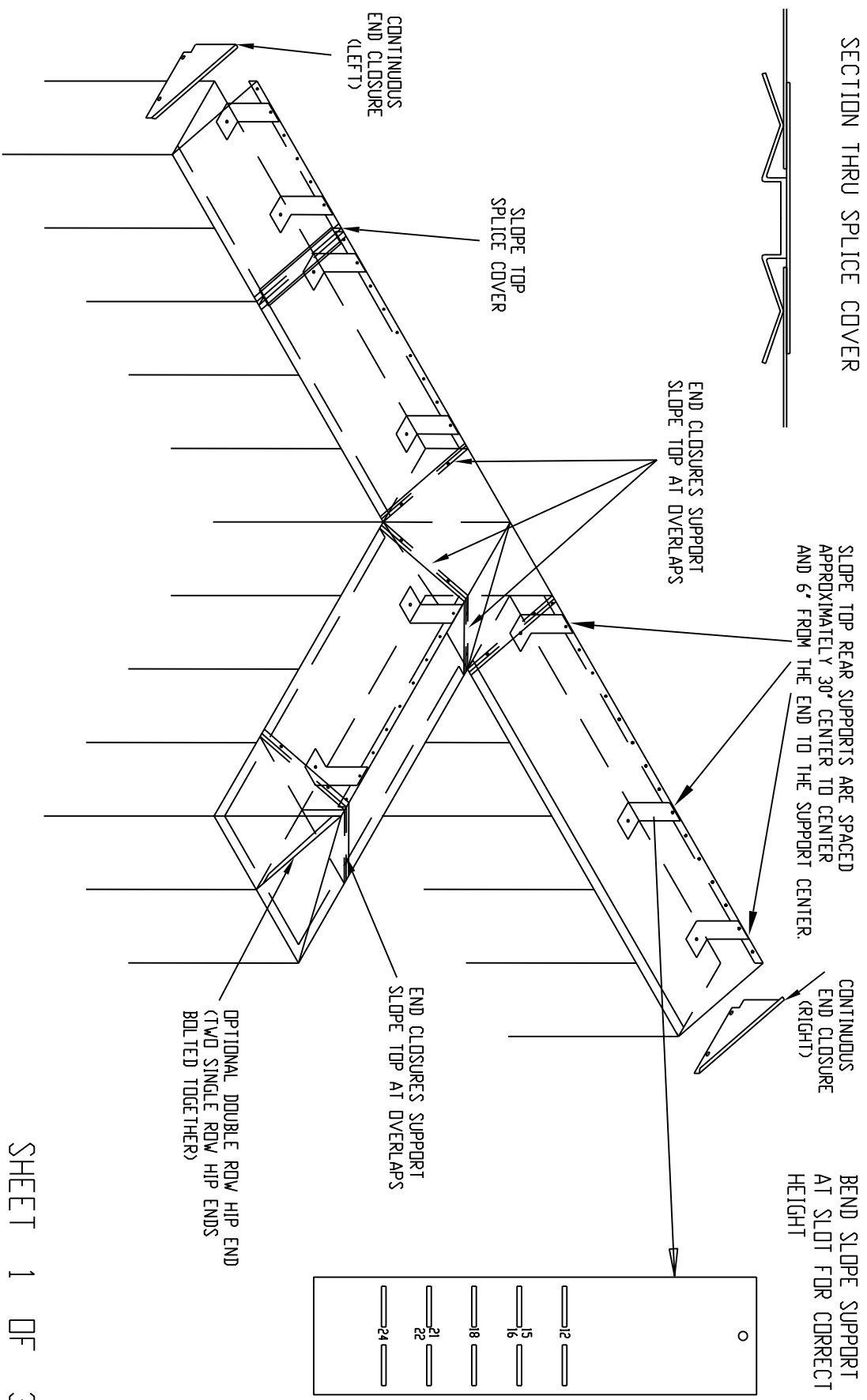
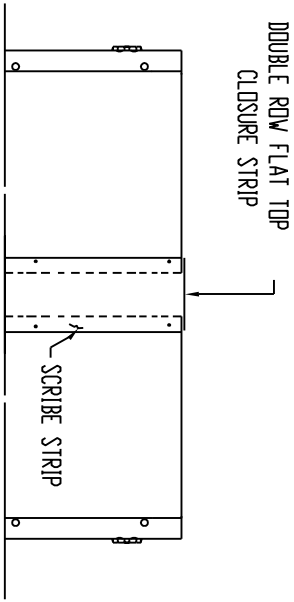
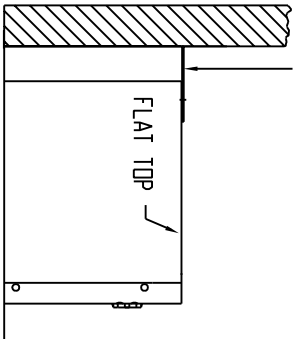
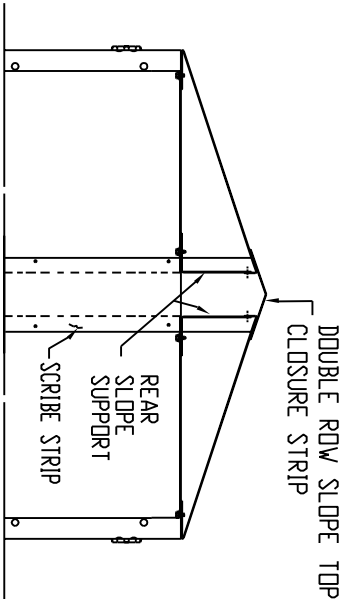
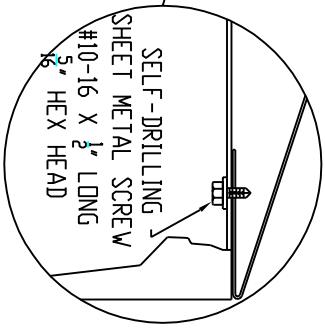


# SLOPE TOP AND SCRIBE FILLER

IN THE INTEREST OF SAFETY, ALL ART METAL LOCKERS MUST BE SECURELY ANCHORED TO THE FLOOR AND WALL.



SLOPE TOPS & SCRIBE FILLERS

 <p>DOUBLE ROW FLAT TOP CLOSURE STRIP</p> <p>SCRIBE STRIP</p> <p>BACK TO BACK W/FLAT TOP</p>	<p>SCRIBE STRIP (REQUIRED WHEN BLOCKING IS USED)</p>  <p>FLAT TOP</p> <p>SINGLE ROW W/FLAT TOP</p>
 <p>DOUBLE ROW SLOPE TOP CLOSURE STRIP</p> <p>REAR SLOPE SUPPORT</p> <p>SCRIBE STRIP</p> <p>BACK TO BACK W/SLOPE TOP</p>	<p>SLOPE TOP SCRIBE STRIP ( REQUIRED WHEN BLOCKING IS USED )</p> <p>SLOPE TOP</p> <p>FLAT TOP</p> <p>SINGLE ROW W/SLOPE TOP</p>  <p>SELF-DRILLING SHEET METAL SCREW #10-16 X 1 1/2" LONG 5/8" HEX HEAD</p> <p>SHEET 2 OF 3</p>

NOTES :

1. LEVEL AND BOLT LOCKERS TOGETHER BEFORE ATTEMPTING TO INSTALL SLOPED TOPS.
2. BOLT REAR FLANGE OF TOP TO THREE (3) SLOPE TOP REAR SUPPORTS AS SHOWN.  
(DOUBLE ROW LOCKERS BOLT REAR FLANGE OF BOTH TOPS TO SLOPE TOP REAR SUPPORTS.)
3. ATTACH END CLOSURE FOR CONCEALED CONDITION ONLY USING TWO (2) TEK SCREWS THRU SLOPE TOP.
4. SLIP SPLICE COVER ONTO ENDS) TO BE JOINED. PUT WHOLE ASSEMBLY ONTO TOP OF LOCKERS AND ALIGN.
5. DO THE SAME WITH THE NEXT SECTION OF SLOPE TOP AND SLIP INTO THE SPLICE COVER OF THE SECTION ALREADY FASTENED.
6. CUT LAST SECTION TO REQUIRED LENGTH AND SLIP CUT EDGE INTO THE LAST ATTACHED SPLICE COVER, THEN ATTACH SLOPE TOP TO END CLOSURE USING TEK SCREWS.
7. FASTEN THE FRONT FLANGE THROUGH THE HOLE IN THE FLAT TOP. THREE (3) TEK SCREWS PER SLOPE TOP.
8. WHEN ALL FRONT FLANGES ARE FASTENED, ALIGN EXPOSED SLOPE END CLOSURES. FIRST FASTEN TO THE LOCKER, THEN DOWN THROUGH SLOPE TOP.

SHEET 3 OF 3